

BURFORD TEA CHEST 2 DRAWER B2/3 AMBERLEY GREY OAK

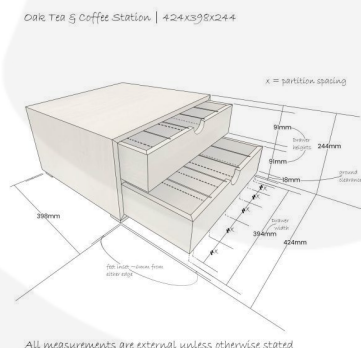
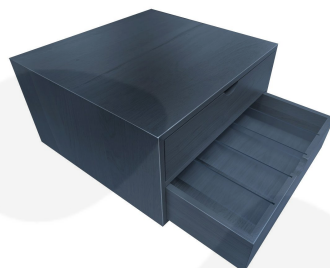
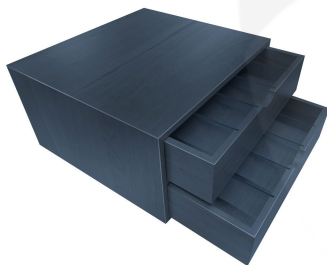
SKU: TC2-B23-AG

£369.94 Excl. VAT



- Designed around the [modular Hospitality System](#) - standalone or integral in the bigger picture
- B2/3 footprint 424x398x244mm - great capacity
- Flexible partitions - versatile storage
- Solid Oak - sturdy design for frequent use
- Customisable - define your own labels
- Reversible drawers

GALLERY IMAGES



B2/3 AMBERLEY GREY OAK TEA & COFFEE STATION

This high capacity B2/3 Amberley Grey Oak Tea & Coffee Station 424x398x244mm is not only extremely attractive but exceptionally practical. It has been designed within our [Modular hospitality system](#) to a B2/3 footprint. This means, like the boxes, it fits comfortably on our Hospitality Trolleys. The multi-functional station also stacks on the trolley boxes offering maximum capacity whilst being transported on one of our hospitality catering trolleys. It stands on 4 x 18mm thick feet, giving it plenty of clearance to avoid the consequence of spillages.

It is a great stand alone Tea and Coffee Station but being part of the modular system it combines very well with the other components when setting up buffets and banquets.

The oak drawers have finger cut-outs for ease of opening and are compartmentalised with 4 acrylic dividers.

Multiple Label Options

The drawer fronts can be left blank or engraved as you like. They are also reversible allowing you to engrave one end with the option to reverse the drawers to display the blank end when required.

Also available is the [Burford Tea Chest 2 Drawer B1/3 Natural Oak](#)

<https://ligneus.co.uk/wp-content/uploads/2023/09/tea-chest.mp4>

ADDITIONAL INFORMATION

Dimensions	424 × 398 × 244 mm
Wood	Oak
Finish	Lacquered
Colour	Amberley Grey
Assembly	Pre-assembled
Options & Features	Removable Partitions