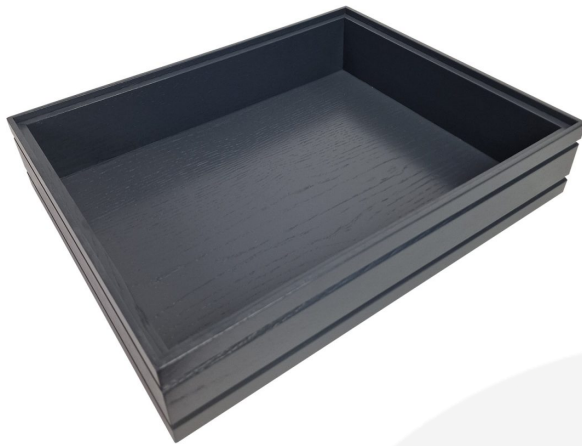


BURFORD RIB BOX B1/2 80MM AMBERLEY GREY

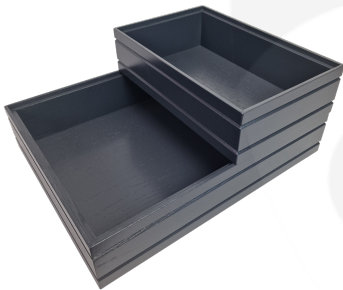
SKU: BOR-B1/2-80-AG

£79.73 Excl. VAT

- Dimensions: 398mm x 318mm x 80mm
- Highest quality finish - for high end presentation
- Part of the [Modular Hospitality Trolley System](#)
- Stackable - ideal for display
- Solid oak - very robust for continuous use
- Ribbed finish - for a look with character



GALLERY IMAGES



BURFORD RIB BOX B1/2 80MM AMBERLEY GREY 398MM X 318MM X 80MM

The Burford Rib Box B1/2 80mm Amberley Grey is high quality stand alone ribbed oak box. Built from 12mm sustainable oak this is not only a beautiful but very robust product. It is beautifully finished in a food grade oil with a ribbed stylish design.

This box is part of the [Modular Hospitality Trolley System](#) and is stackable within the range.

These lacquered boxes are available in Natural, Amberley Grey, Dark Brown and Black.

ADDITIONAL INFORMATION

Dimensions	398 × 318 × 80 mm
Wood	Oak
Finish	Lacquered
Buffet Size	B1/2
Compartments	1 Compartment
Options & Features	Ribbed Styling
Colour	Amberley Grey
Height	80mm
Length	398mm
Width	318mm