



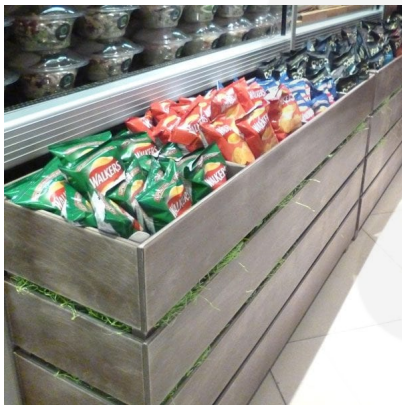
**MOBILE AMBERLEY GREY 4 BIN  
IMPULSE MERCHANDISE DISPLAY  
STAND 1200X300X670**

**SKU: IBM1200300600AG**

**£384.67 Excl. VAT**

- Great Bin volume - holds plenty of merchandise
- Multi-function - can be used as a queue divide offering versatility
- Casters - for added mobility
- FSC timber - great ecological credentials

**GALLERY IMAGES**



## **MOBILE AMBERLEY GREY 4 BIN IMPULSE MERCHANDISE DISPLAY STAND 1200X300X670**

The Mobile Amberley Grey Painted 4 Bin Impulse Merchandise Display Stand 1200x300x670 is a great size for containing your products and having them close to hand at point of sale. Amberley Grey is a cool anthracite grey - very popular indeed. It is multi functional having a use as a queue divider as well. This merchandise bin comes with a set of 4 casters, 2 of which are braked.

It is available in a selection of colours however if you prefer a more rustic design then our [Rustic Brown 4 Bin Impulse Merchandise Display Stand](#) may be just what you are looking for.

### **ADDITIONAL INFORMATION**

<b>Weight</b>	18.77 kg
<b>Dimensions</b>	1200 × 230 × 670 mm
<b>Colour</b>	Amberley Grey
<b>Wood</b>	Plywood
<b>Mobility</b>	On Casters
<b>Assembly</b>	Pre-assembled
<b>Additional Material</b>	Metal
<b>Compartments</b>	4 Compartments
<b>What it holds</b>	Merchandise
<b>Finish</b>	Painted