

**MOBILE BLACK 4 BIN IMPULSE
MERCHANDISE DISPLAY STAND
1200X300X670**

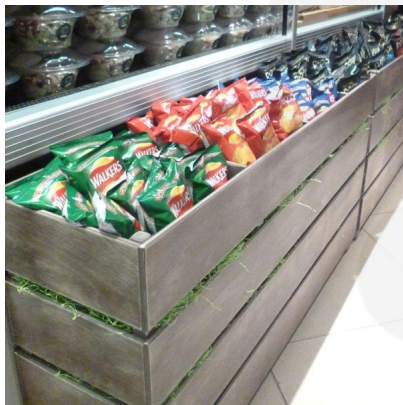
SKU: IBM1200300600BK

£384.67 Excl. VAT

- Great Bin volume - holds plenty of merchandise
- Multi-function - can be used as a queue divide offering versatility
- Casters - for added mobility
- FSC timber - great ecological credentials



GALLERY IMAGES



MOBILE BLACK 4 BIN IMPULSE MERCHANDISE DISPLAY STAND 1200X300X670

The Mobile Black Painted 4 Bin Impulse Merchandise Display Stand 1200x300x670 is a great size for containing your products and having them close to hand at point of sale. It is multi functional having a use as a queue divider as well. This Black merchandise bin comes with a set of 4 casters, 2 of which are braked.

It is available in a selection of colours however if you prefer a more rustic design then our [Rustic Brown 4 Bin Impulse Merchandise Display Stand](#) may be just what you are looking for.

ADDITIONAL INFORMATION

Weight	18.77 kg
Dimensions	1200 × 230 × 670 mm
Colour	Black
Wood	Plywood
Mobility	On Casters
Assembly	Pre-assembled
Additional Material	Metal
Compartments	4 Compartments
What it holds	Merchandise
Finish	Painted