



## MOBILE PAINTED CRATE 500X370X330

**SKU:** CRM500370250 "XXX"

**From £64.33 Excl. VAT**

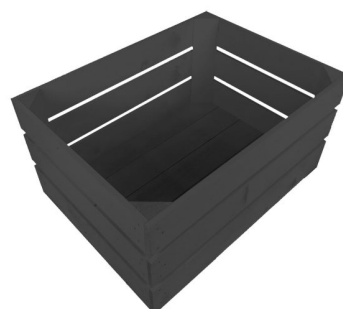
- Solid design – built to last
- Wide range of colours available – match your designs
- Drop front – easy access & display
- Standard size – great capacity
- FSC Redwood – great ecological credentials
- On casters – for great mobility

## VARIATIONS

White  
Kingscote Blue  
Black  
Burleigh Cream  
Cherington Pink  
Frampton Green  
Gretton Grey  
Sherston Claret  
Tetbury Green  
Nailsworth Blue

**Colour**

## GALLERY IMAGES





## MOBILE PAINTED CRATE 500X370X330

You can add practicality and colour to your kitchen, office or bedroom with this Mobile Painted Crate 500x370x330. You can use them as smart storage solutions, book cases, shelves for clothes and even shop displays. With a colourful jolly look they complement a classic taste and style.

This forms the base for any stacker crate system with 500 x 370 as their length x width. The crate comes with a [set of 4 casters](#) 2 of which are braked.

### ADDITIONAL INFORMATION

<b>Dimensions</b>	500 × 370 × 330 mm
<b>Colour</b>	Black, Burleigh Cream, Cherington Pink, Frampton Green, Gretton Grey, Kingscote Blue, Nailsworth Blue, Sherston Claret, Tetbury Green, White
<b>Wood</b>	Redwood
<b>Mobility</b>	On Casters
<b>Finish</b>	Painted