

MOBILE PAINTED CRATE 500X370X330

SKU: CRM500370250 "XXX"

From £64.33 Excl. VAT



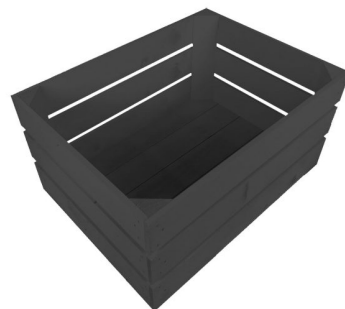
- Solid design - built to last
- Wide range of colours available - match your designs
- Drop front - easy access & display
- Standard size - great capacity
- FSC Redwood - great ecological credentials
- On casters - for great mobility

VARIATIONS

White
Kingscote Blue
Black
Burleigh Cream
Cherington Pink
Frampton Green
Gretton Grey
Sherston Claret
Tetbury Green
Nailsworth Blue

Colour

GALLERY IMAGES





MOBILE PAINTED CRATE 500X370X330

You can add practicality and colour to your kitchen, office or bedroom with this Mobile Painted Crate 500x370x330. You can use them as smart storage solutions, book cases, shelves for clothes and even shop displays. With a colourful jolly look they complement a classic taste and style.

This forms the base for any stacker crate system with 500 x 370 as their length x width. The crate comes with a [set of 4 casters](#) 2 of which are braked.

ADDITIONAL INFORMATION

Dimensions	500 × 370 × 330 mm
Colour	Black, Burleigh Cream, Cherington Pink, Frampton Green, Gretton Grey, Kingscote Blue, Nailsworth Blue, Sherston Claret, Tetbury Green, White
Wood	Redwood
Mobility	On Casters
Finish	Painted